



**WESTERN BLENDED
PRODUCTS**
The Plasterer's Standard

Western 1-Kote

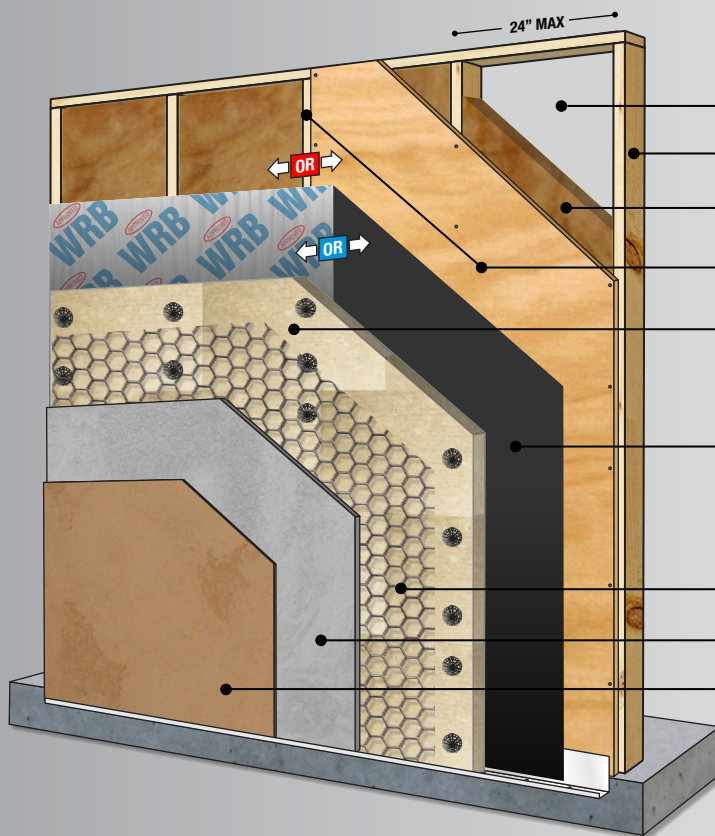
One Hour Firewall Assembly #6

Systems must comply with local building codes and applicable standards. Details shown in this document are for guidance and informational purposes only. Western Blended Products disclaims any liability regarding the use of these drawings and document for any project purpose. The designer of the project determines the functionality equivalency of these details and how these are suited for the project. Installation details may change with time. Please contact Western Blended Products for more information.

System Details

■ One Hour Firewall

● W1K System One Hour Firewall Assembly #6



Minimum Components:

- 5/8" Type X Gypsum Board - Vertical
- 2-by-4 or 2-by-6 Wood Studs (24" Max)
- Non-Combustible Insulation. Or none (optional).

Approved Sheathing Options

- Option 1 (6a) Open Stud (No sheathing)
- Option 2 (6b) 7/16" OSB or Plywood Sheathing.

Continuous Insulation

- Option 1 (6a): Mineral Fiber Board at 1" min. thickness over open stud.
- Option 2 (6b): Mineral Fiber Board at 1" min. thickness over solid sheathing (7/16" Thick OSB or Plywood Sheathing)

Approved Weather Resistive Barrier (WRB)

- Option 1 (6a): Open Stud: One layer 60 Min Building Paper or any WRB Compliant with 2021 IBC Section 1403.2 or IRC Section R703.2 as applicable.
- Option 2 (6b): Solid Sheathing: One layer 60 Min Building Paper or any WRB Compliant with 2021 IBC Section 1403.2 or IRC Section R703.2 as applicable.

20 Gauge Woven Wire

Western 1-Kote 3/8" Basecoat

Finish Coat

Aug 2023

System Detail

Sacramento Stucco Co.
1550 Parkway Blvd. West Sacramento, CA 95691 / (916) 372-7442
Western Stucco Co.
6101 N. 53rd. Drive Glendale, AZ 85311 / (623) 939-9455
Rio Grande Stucco Co.
9151 Roseway Drive El Paso, TX 79907 / (915) 858-3494

Visit us on the web:
westernblended.com



Western Blended Products are manufactured in the U.S.A. utilizing the strictest quality control processes to ensure consistent, high-performance products on every project.

