



Western 1-Kote System

A Fire-Rated Exterior Stucco Wall Assembly with optional continuous insulation boards and Crack Resistant System.

Western Blended Products Western 1-Kote® Systems are eligible for multiple warranty tiers depending upon basecoat selection, finish system configuration, and incorporation of the Crack Resistant System (CRS). Refer to the warranty schedule for specific configuration requirements.



SYS Systems & Assemblies

System Overview:

The Western 1-Kote® System is a code-recognized exterior stucco wall assembly utilizing Western 1-Kote cementitious basecoats in conjunction with approved weather-resistive barriers, metal lath, and compatible finish systems.

Recognized under IAPMO UES ER-382, the system provides an alternative to conventional three-coat stucco assemblies while maintaining compliance with applicable building codes. The system may be configured with standard or premium basecoat options and may incorporate the optional Crack Resistant System (CRS) for enhanced crack resistance performance.

The Western 1-Kote System is adaptable to both non-insulated and insulated wall assemblies in accordance with ER-382.

System Intent and Performance:

The Western 1-Kote System is engineered to:

- Provide a minimum 3/8-inch cementitious basecoat over approved lath assemblies in accordance with ER-382.
- Comply with IAPMO UES ER-382 as an alternative to conventional three-coat stucco systems.
- Deliver a fiber-integrated basecoat designed to reduce shrinkage-related cracking compared to traditional field-mixed plaster systems.
- Accommodate a range of architectural finish systems, including cementitious and acrylic coatings.
- Allow integration of performance-enhancing components, including premium basecoat formulations, Premium Acrylic Finish systems, continuous insulation, and the optional Crack Resistant System (CRS).
- Assemblies include multiple fire-resistance-rated wall configurations in accordance with ER 382.
- NFPA 285-compliant assemblies are available when constructed in accordance with approved configurations. Refer to ER-382 for full assembly listings and requirements.

When configured with the Crack Resistant System (CRS), the assembly incorporates a reinforced basecoat layer with embedded alkali-resistant mesh designed to enhance crack resistance characteristics and surface durability.

The Western 1-Kote System provides a code-recognized exterior plaster assembly adaptable to multiple wall configurations while maintaining compliance with applicable building codes and referenced ASTM standards.

The system is not structural and does not eliminate cracking resulting from structural movement.

System Components:

Basecoat Options:

- **Standard:** Western 1-Kote Gray Concentrate or Sanded Gray.
- **Premium:** Western 1-Kote Premium Gray

Page 1 of 2

Concentrate or Premium Sanded Gray.
Minimum thickness: 3/8 inch over approved lath assemblies in accordance with ER-382.

Weather-Resistive Barrier (WRB):

- Code-approved weather-resistive barrier installed in accordance with ER-382 and applicable building code requirements.

Metal Lath & Accessories:

- Metal lath complying with ASTM C847.
- Installation in accordance with ASTM C1063.
- Control and expansion joints as required by code.

Exterior Finish Options:

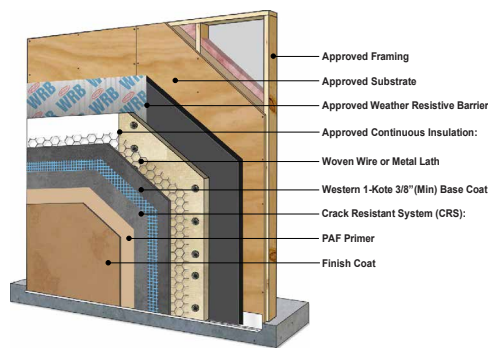
- WBP Exterior Stucco Finish
- WBP Premium Acrylic Finish + PAF Primer
- Exterior Finish Coatings by additional listees from IAPMO UES ER-382

Premium Acrylic Finish assemblies requiring 7-, 10-, or 15-year warranty tiers shall incorporate PAF Primer in accordance with WBP installation requirements.

Optional Enhancement: Crack Resistant System (CRS).

- The Crack Resistant System (CRS) consists of BPS Armor CRS reinforcing basecoat and alkali-resistant fiberglass mesh installed at a minimum 1/16-inch embedment thickness.

When incorporated into the Western 1-Kote System, CRS elevates the assembly to the reinforced warranty tier in accordance with the warranty schedule. CRS enhances crack resistance characteristics but is not structural reinforcement.



Typical System Configuration:

A typical Western 1-Kote System assembly consists of:

1. Approved structural substrate (wood-based sheathing, gypsum sheathing, concrete, or masonry as permitted by ER-382).
2. Code-compliant weather-resistive barrier.
3. Self-furred metal lath mechanically fastened in accordance with ASTM C1063.
4. Western 1-Kote basecoat applied to a minimum thickness of 3/8 inch.

5. Optional Crack Resistant System (CRS), when specified.

6. Selected exterior finish coating.

Continuous insulation boards, where permitted under ER-382, may be incorporated within the assembly.

Substrate Requirements:

Substrates shall comply with the requirements of ER-382 and applicable building codes. Substrates permitted under ER-382 include walls of:

- Concrete
- Masonry
- Wood structural panel wall sheathing
- Fiberboard
- Light-frame construction covered with gypsum board
- Foam plastic insulation board
- Mineral wool insulation board
- Insulated concrete forms (ICFs)
- Similar approved substrates in accordance with ER-382

Light-frame wall assemblies shall utilize wood studs with a minimum specific gravity of 0.50 or minimum 0.035-inch-thick (No. 20 gage) steel studs spaced a maximum of 24 inches on center.

Application of cement plaster shall be performed over substrates prepared in accordance with Section 3.2.3 of ER-382.

Substrates shall be structurally sound, properly braced, and free of conditions that may adversely affect system performance.

Environmental Conditions:

Components shall not be installed when surface or ambient temperatures are below 40°F (4.4°C) or above 100°F (38°C).

All cementitious components require a minimum of forty-eight (48) hours moist curing. Extended curing may be required under conditions of heat, wind, or low humidity.

Protect installed materials from freezing, rapid drying, or inclement weather until adequately cured.

System Limitations:

The Western 1-Kote System:

- Is not structural.
- Does not eliminate cracking caused by structural movement.
- Requires proper control joint placement in accordance with ASTM C1063 or as specified by the project designer or architectural specification.
- Must be installed in accordance with ER-382 and WBP installation requirements.
- Requires installation by qualified applicators.
- System performance is dependent upon compliance with WBP installation guidelines and integration within approved stucco assemblies.

Code and Standards:

The Western 1-Kote System is recognized and evaluated under:

REV 02.18 .2026

Sacramento Stucco Co.
1550 Parkway Blvd. West Sacramento, CA 95691 / (916) 372-7442

Western Stucco Co.
6101 N. 53rd. Drive Glendale, AZ 85311 / (623) 939-9455

Rio Grande Stucco Co.
9151 Roseway Drive El Paso, TX 79907 / (915) 858-3494



www.westernblended.com

For updated information, please visit our website.

Western Blended Products are manufactured in the U.S.A. & Mexico utilizing the strictest quality control processes to ensure consistent, high-performance products on every project.





Western 1-Kote System

An Exterior Stucco Wall Assembly with optional continuous insulation boards and Crack Resistant System.

Western Blended Products Western 1-Kote® Systems are eligible for multiple warranty tiers depending upon basecoat selection, finish system configuration, and incorporation of the Crack Resistant System (CRS). Refer to the warranty schedule for specific configuration requirements.



SYS Systems & Assemblies

- IAPMO UES ER-382
- 2024, 2021, 2018 & 2015 International Building Code (IBC)
- 2024, 2021, 2018 & 2015 International Residential Code (IRC)
- 2025 & 2022 California Building Code (CBC)
- 2023 Florida Building Code (FBC)

Applicable ASTM Standards:

- ASTM C926 — Application of Portland Cement-Based Plaster
- ASTM C1063 — Installation of Lathing and Furring to Receive Portland Cement-Based Plaster
- ASTM C847 — Metal Lath

System Positioning:

The Western 1-Kote System provides a flexible, code-recognized exterior stucco solution adaptable to conventional, insulated, and performance-enhanced wall assemblies.

Through the selection of premium basecoat formulations, Premium Acrylic Finish systems, and the optional Crack Resistant System (CRS), the assembly may be configured to address project-specific objectives related to crack resistance, durability, and extended warranty coverage while maintaining compliance with ER-382.

Warranty Schedule Matrix:

The warranty schedule outlines the available warranty terms for the Western 1-Kote System based on basecoat selection, finish system configuration, and incorporation of the Crack Resistant System (CRS). Warranty duration is dependent upon compliance with WBP installation requirements and proper integration of system components as defined in this Technical Data Sheet and ER-382.

Conditions of Use and Limited Warranty

Specifications for this product are based on optimal environmental conditions (70°F ambient temperature with 50% humidity) for preparation, mixing, application and curing. Specification parameters may vary as environmental conditions change. Consult the product's Safety Data Sheet or GHS Section located on the product package for hazard identification and first aid measures. KEEP OUT OF REACH OF CHILDREN.

Western Blended Products (WBP) warrants that its products are of merchantable quality and suitable for the general purpose for which they are intended when applied in accordance with WBP instructions. The manufacturers of WBP products do not warrant the products to be suitable for any purpose or use other than that for which they are intended. Liability under this warranty is limited to supplying new material without charge or, at the option of the manufacturer of the WBP product, refunding the purchase price. In the event of a claim under this warranty, written notice must be provided to the originating plant of the WBP product at the address shown herein. This limited warranty is issued and accepted in lieu of all other express warranties and expressly excludes liability for consequential damages. Some states do not allow the exclusion or limitation of incidental or consequential damages, or limitations on how long an implied warranty lasts; therefore, the above limitations or exclusions may not apply.

Warranty Schedule:

Basecoat Selection:	CRS System	Finish Coat Selection:	Term
<ul style="list-style-type: none"> • Western 1-Kote Gray Concentrate • Western 1-Kote Sanded Gray 	• No	• Exterior Stucco Finish	3 YRS
<ul style="list-style-type: none"> • Western 1-Kote Gray Concentrate • Western 1-Kote Sanded Gray 	• No	• Premium Acrylic Finish	5 YRS
<ul style="list-style-type: none"> • Western 1-Kote Premium Gray Concentrate • Western 1-Kote Premium Sanded Gray 	• No	• Exterior Stucco Finish	5 YRS
<ul style="list-style-type: none"> • Western 1-Kote Gray Concentrate • Western 1-Kote Sanded Gray 	• Yes	• Exterior Stucco Finish	7 YRS
<ul style="list-style-type: none"> • Western 1-Kote Premium Gray Concentrate • Western 1-Kote Premium Sanded Gray 	• No	<ul style="list-style-type: none"> • Premium Acrylic Finish • + PAF Primer 	7 YRS
<ul style="list-style-type: none"> • Western 1-Kote Gray Concentrate • Western 1-Kote Sanded Gray 	• Yes	<ul style="list-style-type: none"> • Premium Acrylic Finish • + PAF Primer 	10 YRS
<ul style="list-style-type: none"> • Western 1-Kote Premium Gray Concentrate • Western 1-Kote Premium Sanded Gray 	• Yes	• Exterior Stucco Finish	10 YRS
<ul style="list-style-type: none"> • Western 1-Kote Premium Gray Concentrate • Western 1-Kote Premium Sanded Gray 	• Yes	<ul style="list-style-type: none"> • Premium Acrylic Finish • + PAF Primer 	15 YRS

Warranty Conditions & Notes

1. Premium Acrylic Finish Requirement: Premium Acrylic Finish assemblies require the use of PAF Primer in the 7-, 10-, and 15-year warranty tiers in accordance with WBP installation requirements. PAF Primer is not required in the 5-year warranty tier.
2. Crack Resistant System (CRS) Escalation: Addition of the Western Blended Products Crack Resistant System (CRS) increases the warranty term for a non-CRS assembly by three (3) years where applicable under this schedule (e.g., 3 → 7 years). Warranty terms are limited to the defined tiers and capped at fifteen (15) years.
3. Blackcap Admix: Blackcap Admix may be incorporated to enhance basecoat strength and adhesion characteristics and may be required for select extended warranty assemblies.
4. Maximum Warranty Term: The maximum system warranty available under this schedule is fifteen (15) years.

