



WESTERN BLENDED PRODUCTS
The Plasterer's Standard

Western 1-Kote

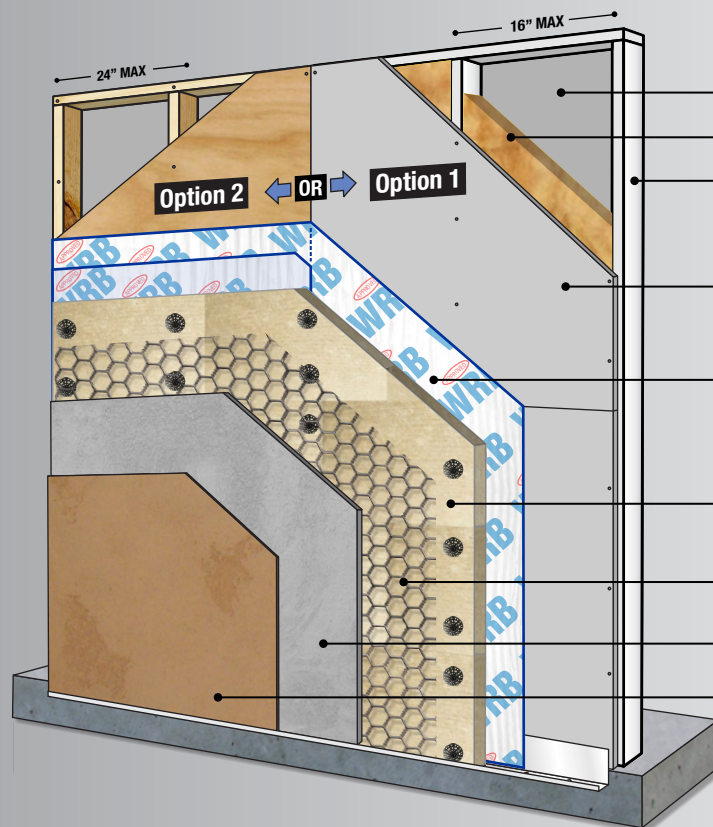
NFPA 285 With Insulation

System Details

■ NFPA 285

Systems must comply with local building codes and applicable standards. Details shown in this document are for guidance and informational purposes only. Western Blended Products disclaims any liability regarding the use of these drawings and document for any project purpose. The designer of the project determines the functionality equivalency of these details and how these are suited for the project. Installation details may change with time. Please contact Western Blended Products for more information.

W1K System - NFPA 285 With Mineral Wool Insulation Board



Minimum Components:

5/8" Type X Gypsum Board - Horizontal

Non-Combustible Insulation. Or none (optional).

Approved Framing

- Option 1: 20G by 3 5/8" non-load bearing Steel Studs
- Option 2: Fire Retardant-Treated Wood (FRTW)

Approved Sheathing

- Option 1: 1/2" Gypsum Sheathing Outside Face - Horizontal
- Option 2: ALT - 1/2" Min Fire-Retardant-Treated Plywood Sheathing - Horizontal

Approved Water Resistive Barrier (WRB)

Meeting criteria of IBC Section 1402.5 Exception 2.

- Option 1: Single Layer of Approved WRB over 1/2" Gypsum Sheathing
- Option 2: Two Layers of Approved WRB over 1/2" Fire-Retardant Plywood Sheathing

Continuous Insulation

Mineral Wool Insulation Board at 1" minimum thickness.

20 Gauge Woven Wire or Metal Lath

Western 1-Kote Basecoat (3/8" Min)

Finish Coat

Aug 2023

System Detail

Sacramento Stucco Co.
1550 Parkway Blvd. West Sacramento, CA 95691 / (916) 372-7442
Western Stucco Co.
6101 N. 53rd. Drive Glendale, AZ 85311 / (623) 939-9455
Rio Grande Stucco Co.
9151 Roseway Drive El Paso, TX 79907 / (915) 858-3494

Visit us on the web:
westernblended.com



Western Blended Products are manufactured in the U.S.A. utilizing the strictest quality control processes to ensure consistent, high-performance products on every project.

