



**WESTERN BLENDED PRODUCTS**  
The Plasterer's Standard

## System: Crack Resistant System (CRS)

A skim coating stucco system assembly designed to reduce surface cracking for use in residential and commercial stucco systems.

Western Blended Products Crack Resistant Systems are associated with all system warranties for WBP systems depending on its components. Consult our systems and assemblies for more info.

**SYS** Systems & Assemblies

### System description:

Western Blended Products (WBP) Crack Resistant System (CRS) is a skim coating stucco system assembly consisting on a layer of BPS Kote with embedded fibermesh which is designed to reduce surface cracking. The CRS System may be included in any 1-Kote or Conventional system assembly Western Blended Products offer for both commercial and residential projects. See warranty documentation for 1-Kote & WBP Conventional Systems for more information.

### Systems Recognition:

Western Blended Products Crack Resistant System is compliant with ASTM C926 & C150 and are recognized in both IBC/IRC Building Codes.

### System Components:

Western Blended Products Conventional Systems may consist of following components:

- **A BPS Kote, Skim Coat with embedded fibermesh - Crack-Resistant System (CRS).** BPS Kote must be applied at a minimum thickness of 1/16" with an approved alkali-resistant reinforcing fibermesh fully embedded within the coating. Reinforcing fibermesh recommended for the CRS System is 4.5 oz, but fibermesh comes in a variety of weights and sizes that may be approved. Consult your Western Blended Products representative for more information.

### System Overview:

Typically, the Crack Resistant System (CRS) is applied over an existing or newly applied basecoat in any stucco system or assembly. CR Systems may also be applied over concrete or masonry surfaces. CR Systems are normally present in multi-year Western Blended Products system warranties in both commercial and residential buildings. Although cracking may be present in any stucco system, the CR System is designed to reduce surface cracking when it's properly installed. The CR System may be used in both One-Coat & Conventional Stucco Systems.

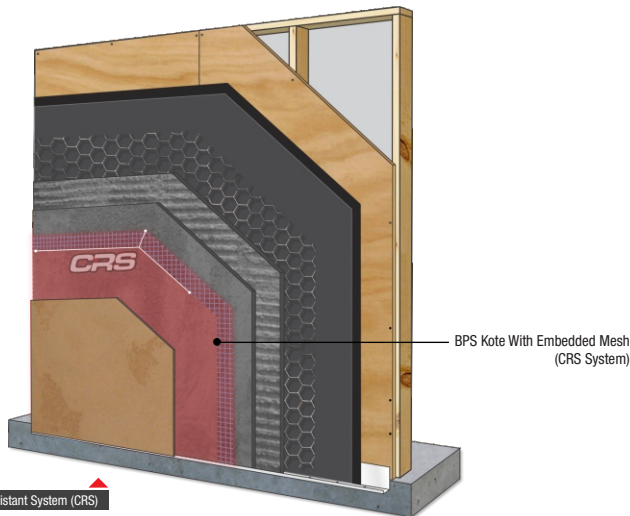
### System Limitations and Requirements:

Ensure the following is taking place before the application of the system components:

- All components must be installed per code requirements.
- Wood-based sheathing shall be gapped 1/4" to allow for expansion.
- Substrates are structurally sound, free of loose materials, voids, projections or other conditions that may interfere with the installation of the components.
- Substrates are dry, clean, free of oils, grease, efflorescence, or other liquid or solid debris.
- There are no projections or planar irregularities greater than 1/4" within any 4' radius in the substrate.
- Masonry or Concrete surfaces are sealed or prepared with a bonding agent prior to the application of any basecoat.
- All penetrations & openings are properly flashed.
- All components are stored above ground under optimal conditions, or if stored outdoors, shall be adequately covered to keep dry.
- Components shall be installed as instructed by the manufacturer and must be in compliance with the latest Evaluation report and stated references (if applicable).
- Components shall not be installed when surface or ambient temperatures are at or below 40°F / 4.4°C or above 100°F / 34°C.
- Cementitious components require a minimum of forty-eight (48) hours moist curing. Environmental conditions such a heat, wind and low humidity will require additional curing.
- Protect all installed components from freezing and inclement weather until dry.
- Consult the latest existing codes & regulations prior to the installation of any WBP System assembly.

### System Assembly Options and Warranties:

All available WBP 1-Kote & WBP Conventional System Assemblies which include the Crack Resistant Systems are listed in the system documentation. Consult the 1-Kote System & WBP Conventional System Warranties documents for more information.



### Warranty:

Manufacturers or Western Blended Products (WBP) warrants its products to be of merchantable quality and suitable for the general purpose for which they were intended, when applied in accordance with WBP instructions. Manufacturers of WBP do not warrant its products to be suitable for any purpose or use other than for which they were intended. Liability under this warranty is limited to supplying new material without charge, or at manufacturers of WBP option, to a refund of the purchase price. In the event of a claim under this warranty, written notice must be given to the originating plant of the WBP goods at the address shown hereon. This limited warranty is issued and accepted in lieu of all other expressed warranties, and expressly excludes liability for consequential damages. Some states do not allow the exclusion or limitation of incidental or consequential damages, or limitations on how long an implied warranty lasts, so the above limitations and exclusions may not apply to you. This warranty gives you specific legal rights, and you may also have other rights that vary from state to state.

