



**WESTERN BLENDED  
PRODUCTS**  
The Plasterer's Standard

# Western 1-Kote

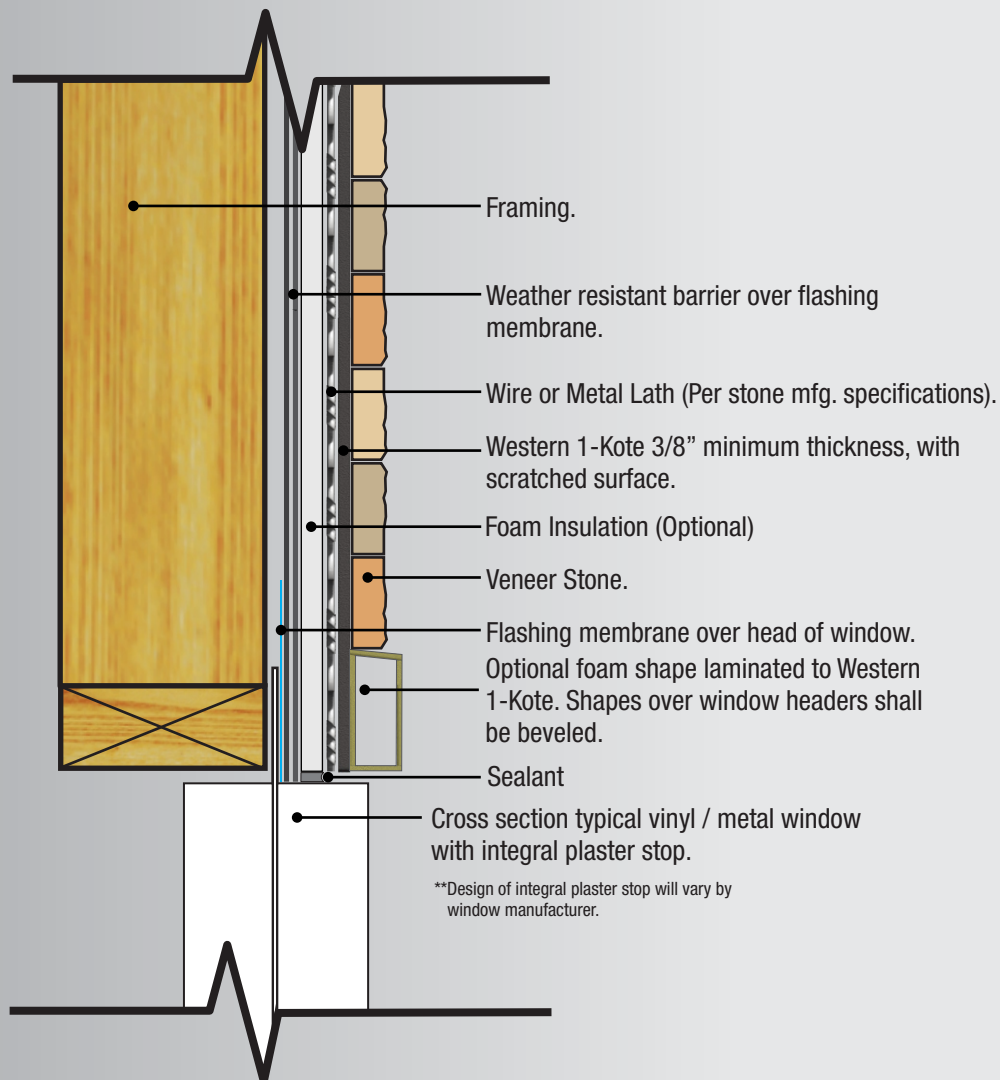
Western 1-Kote Component Assembly

Systems must comply with local building codes and applicable standards. Details shown in this document are for guidance and informational purposes only. Western Blended Products disclaims any liability regarding the use of these drawings and document for any project purpose. The designer of the project determines the functionality equivalency of these details and how these are suited for the project. Installation details may change with time. Please contact Western Blended Products for more information.

## System Details

### ■ Typical Installation

#### Window Termination With Veneer Stone & EPS Shape



April 2018

System Detail

**Sacramento Stucco Co.**  
1550 Parkway Blvd. West Sacramento, CA 95691 / (916) 372-7442  
**Western Stucco Co.**  
6101 N. 53rd. Drive Glendale, AZ 85311 / (623) 939-9455  
**Rio Grande Stucco Co.**  
9151 Roseway Drive El Paso, TX 79907 / (915) 858-3494

Visit us on the web:  
[westernblended.com](http://westernblended.com)



Western Blended Products are manufactured in the U.S.A. utilizing the strictest quality control processes to ensure consistent, high-performance products on every project.

