



**WESTERN BLENDED
PRODUCTS**
The Plasterer's Standard

Western 1-Kote

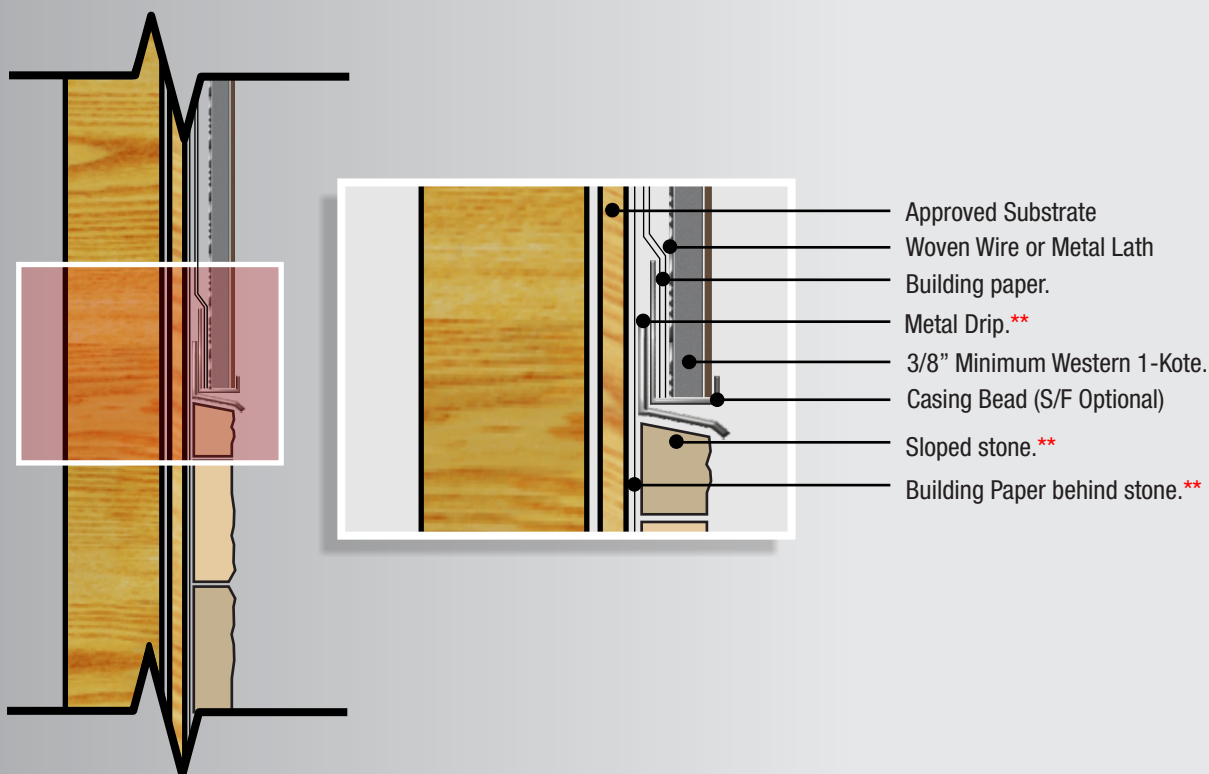
Western 1-Kote Component Assembly

Systems must comply with local building codes and applicable standards. Details shown in this document are for guidance and informational purposes only. Western Blended Products disclaims any liability regarding the use of these drawings and document for any project purpose. The designer of the project determines the functionality equivalency of these details and how these are suited for the project. Installation details may change with time. Please contact Western Blended Products for more information.

System Details

■ Typical Installation

Stone Termination With Casing & Metal Drip



**Notes:

Building paper behind stone shall extend a minimum of 6" above the back flange of the drip screed.

A minimum 26 gauge metal drip shall be used with a vertical attachment flange of at least 1 1/2" inches.

Short flange casing bead is acceptable over the metal drip for the termination of the Western 1-Kote system.

The drip edge is not required to be past the edge of the top coarse of the stone, if the stone is sloped to allow proper drainage.

If acrylic finishes or paint coatings are used for the top coat – care shall be taken to prevent the coating from interfering with moisture escaping over the drip edge.

April 2018

System Detail

Sacramento Stucco Co.
1550 Parkway Blvd. West Sacramento, CA 95691 / (916) 372-7442
Western Stucco Co.
6101 N. 53rd. Drive Glendale, AZ 85311 / (623) 939-9455
Rio Grande Stucco Co.
9151 Roseway Drive El Paso, TX 79907 / (915) 858-3494

Visit us on the web:
westernblended.com



Western Blended Products are manufactured in the U.S.A. utilizing the strictest quality control processes to ensure consistent, high-performance products on every project.

